

2026



# CREATE YOUR OWN TOMORROW.



Study in  
Sweden

# Exceptional Service, Unforgettable Student Experience!

- › Career Center
- › Student Health Care
- › Free health insurance
- › Academic support
- › Extracurricular activities and diverse student associations
- › Buddy programme
- › Guaranteed accommodation & pick-up service

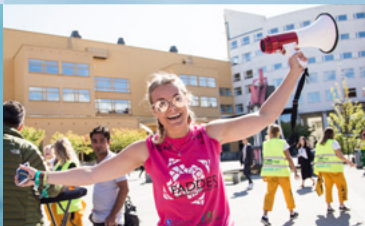


**SPORT  
FACILITIES**

**RANKED #3  
FOR STUDENT LIFE  
IN SWEDEN!**



**GUARANTEED  
ACCOMMODATION**





# Why Jönköping University?

Jönköping University (JU) is one of Sweden's most international universities offering world-class education and research.

**MULTICULTURAL  
ENVIRONMENT**

**GLOBAL  
CAREER**

**PRACTICAL  
EXPERIENCE**

**QUALITY  
EDUCATION**

**INTERSHIPS  
BUILT INTO THE  
PROGRAMMES**

**EXCHANGE  
OPPORTUNITIES  
AROUND THE WORLD**

## RANKINGS AND ACCREDITATIONS

### JÖNKÖPING INTERNATIONAL BUSINESS SCHOOL (JIBS)

**TRIPLE CROWN ACCREDITED**



### SCHOOL OF ENGINEERING



**ACEEU ACCREDITED  
CDIO MEMBER**



**EULIST**  
EUROPEAN UNIVERSITY

### Financial Times TOP 100

Masters in Management 2024



**MASTERS IN  
MANAGEMENT  
2024 RANKING**

### SCHOOL OF HEALTH AND WELFARE



**ISPO ACCREDITED**

**FOCUS ON SUSTAINABILITY,  
ENTREPRENEURSHIP  
AND INNOVATION**

### Financial Times TOP 95

European Business Schools 2024



**MASTERS IN  
MANAGEMENT  
2024 RANKING**

### JÖNKÖPING UNIVERSITY



**RANKED BY TIMES  
HIGHER EDUCATION**

**100**

**NATIONALITIES REPRESENTED  
AMONG OUR 14,000 STUDENTS**



**MORE THAN 330 PARTNER  
UNIVERSITIES WORLDWIDE**



# PROGRAMMES TAUGHT IN ENGLISH 2026

**COST OF  
LIVING APPROX.**  
**960 EUR/month**  
10.584 SEK/month

## BACHELOR

	Area / School	Duration	Tuition Fee per year**
International Economics	Economics Jönköping International Business School	3 years (180 credits)	10,200 EUR* 115,000 SEK
International Management ●	Business Jönköping International Business School		
International Marketing ●			
Industrial Engineering and Management: Sustainable Supply Chain Management	Engineering School of Engineering		15,000 EUR* 170,000 SEK
Graphic Design and Web Development			
Prosthetics and Orthotics			

● Double degree option

## MASTER

	Area / School	Duration	Tuition Fee per year**
Applied Economics and Data Analysis	Economics Jönköping International Business School	2 years (120 credits)	12,250 EUR* 138,000 SEK
Finance	Business Jönköping International Business School	1 year (60 credits)	12,500 EUR* 140,000 SEK
Digital Business and AI Management		2 years (120 credits)	12,250 EUR* 138,000 SEK
Entrepreneurship and Innovation		1 year (60 credits)	12,500 EUR* 140,000 SEK
Leading Change, Organizations and People		2 years (120 credits)	12,250 EUR* 138,000 SEK
Strategic Marketing		1 year (60 credits)	12,500 EUR* 140,000 SEK
Strategic Supply Chain Management		2 years (120 credits)	12,250 EUR* 138,000 SEK
Engineering Management	General Management Jönköping International Business School	1 year (75 credits)	15,500 EUR* 175,000 SEK

# MASTER

	Area / School	Duration	Tuition Fee per year**
User Experience Design (Informatics)	Engineering School of Engineering	1 year (60 credits)	15,000 EUR* 170,000 SEK
AI Engineering (Computer Science)			
Software Engineering for AI (Computer Science)			
Cybersecurity (Computer Science)			
Digital Product Development (Product Development)			
Industrial Design (Product Development)			
Materials Engineering for the Manufacturing Industry (Product Development)			
Supply Chain Operations Management (Production Systems)			
Production Engineering and Automation (Production Systems)			
Sustainable Building Information Management (Built Environment)			
Master in Assistive Technology for Engineers (Product Development)	Health Sciences/ Engineering School of Health and Welfare	2 years (120 credits)	14,200 EUR* 160,000 SEK
Master in Assistive Technology for Prosthetics and Orthotists (Product Development)			
Occupational Therapy (web-based)	Health Sciences School of Health and Welfare	1 or 2 years (60 or 120 credits)	10,700 EUR* 120,000 SEK
Interventions in Childhood	Child Studies School of Health and Welfare	1 year (60 credits)	10,700 EUR* 120,000 SEK
Sustainable Communication	Media Communication School of Education and Communication	1 or 2 years (60 or 120 credits)	
Global Studies: Sustainable Societies and Social Change	Global Studies School of Education and Communication		
Conflict, Risk and International Security			
LeaDS - Learning, Digitalization and Sustainability (web-based)	Education School of Education and Communication		
WorkS - Lifelong Learning, Sustainability			

\*Approx fee in EUR, subject to exchange rate variations.

\*\* Tuition fees do not apply to EU/EEA/Swiss citizens. Tuition fees are paid per semester.

**ACADEMIC REQUIREMENTS may vary by programme.**  
**ENGLISH REQUIREMENTS for direct entry to Bachelor's**  
 and Master's programmes:  
**IELTS** Academic 6.5/5.5  
**TOEFL IBT** 90/20 or **Duolingo English test** 125,  
 Cambridge or equivalent.

LEARN MORE  
ABOUT BACHELOR



LEARN MORE  
ABOUT MASTER



# PATHWAY PROGRAMMES

	IELTS**	Duration	Tuition and Boarding Fee per year ***
Pathway Year English	5.0/4.5	1 year	19,700 EUR* 219 000 SEK
Pathway Year General	5.5/5.0	1 year	28,800 EUR* 232 000 SEK
Pathway Semester English Autumn/Spring	5.5/5.0	1 semester	9,800 EUR* 109 000 SEK
Pathway Semester General Spring	6.0/5.5	1 semester	9,900 EUR* 110 000 SEK
Pathway Intensive English	6.0/5.5	4 weeks	3,200 EUR* 35 000 SEK

\* Approx fee in EUR, subject to exchange rate variations. \*\* Minimum IELTS requirement (overall/ per part). Other English tests accepted.  
\*\*\* Tuition fees do not apply to EU/EEA/Swiss citizens. Tuition fees are paid per semester. \*\*\* Includes tuition and boarding.

The Pathway programmes prepare you to reach the English proficiency and some academic requirements that can lead to a conditional offer for degree studies. The programmes are taught on our beautiful **campus in Gränna** in a multicultural classroom!

Accommodation, meals, as well as social and cultural activities are included in the cost.

## SKILLS YOU'LL DEVELOP

- English proficiency
- Communication skills
- Academic writing
- Confidence and critical thinking
- Sustainability practices
- Intercultural competence and Global citizenship



## SUMMER SCHOOL

Want to develop your academic knowledge, learn about Swedish culture and experience an international environment?

Find out more  
[ju.se/summerschool](https://ju.se/summerschool)



# JU DIRECT APPLICATION

Learn more about how to apply to the programmes, scholarships and funding opportunities.

ROLLING ADMISSION OCTOBER – MAY



Starting dates for other programmes can be found on our website.



# START YOUR GLOBAL CAREER

- › Hands-on experience
- › Network with Swedish and International companies
- › Internships built in the programmes – #1 in Sweden
- › Practical case studies, competitions and projects
- › Science Park – An innovation hub to grow your ideas and start your own business alongside your studies.

**”** *I've always wanted to create something meaningful. My thesis at VOLVO was about merging AI, engineering, and human understanding. An amazing experience!*

MIRANDA MARTINEZ RODRIGUEZ,  
AI ENGINEERING.

**”** By offering internships or a job related to a student's thesis work, we have the opportunity to work with talented students who have up-to-date knowledge.



ANDREAS RANGERT  
CEO TREE PRO CUSTOMER UNIT  
AND TECHNOLOGY OPERATIONS,  
HUSQVARNA GROUP, SWEDEN

**90%**

STUDENTS GAIN EMPLOYMENT  
WITHIN 2 MONTHS

**1 000+**  
PARTNER COMPANIES



**SAAB**

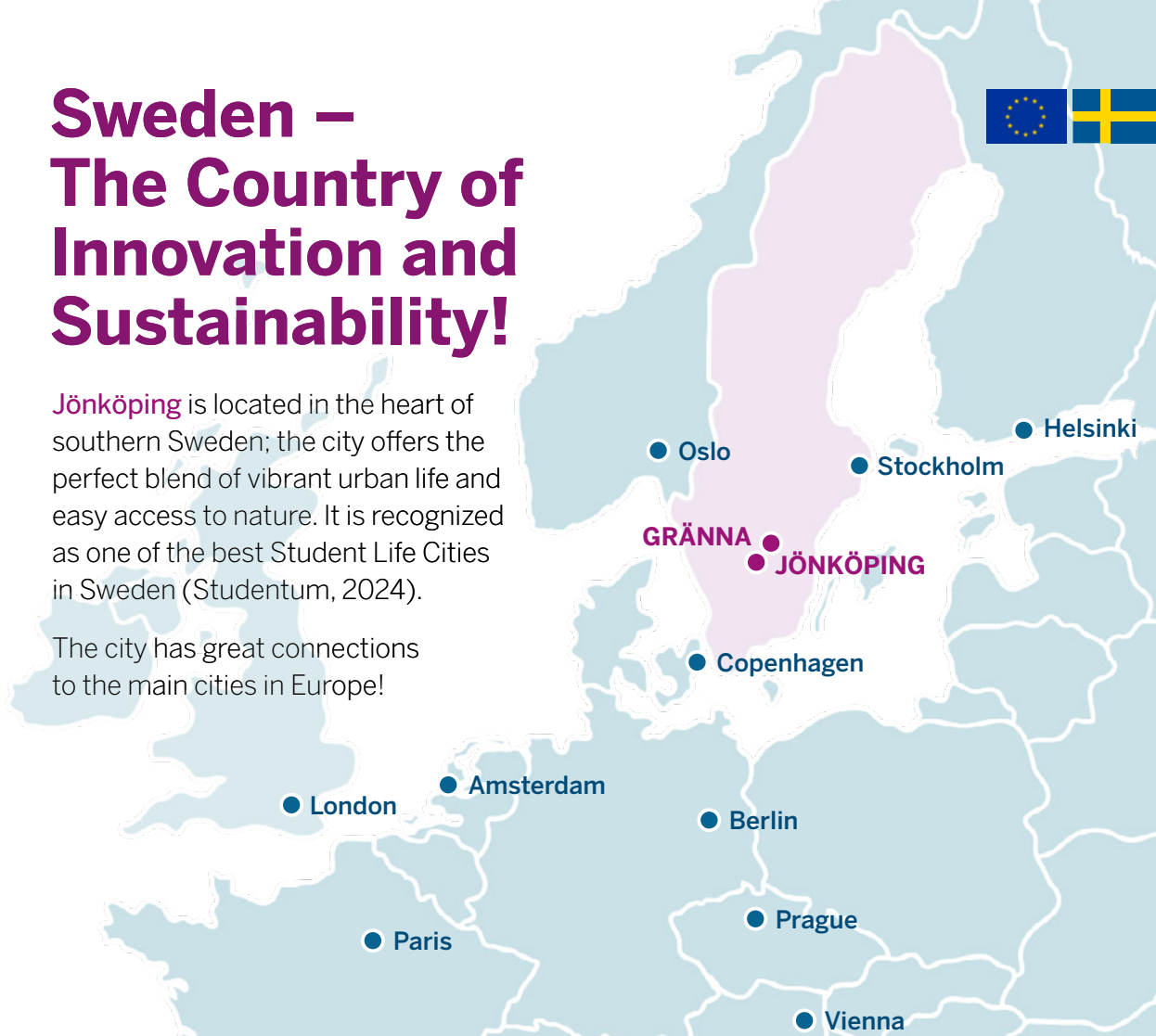


# Sweden – The Country of Innovation and Sustainability!



**Jönköping** is located in the heart of southern Sweden; the city offers the perfect blend of vibrant urban life and easy access to nature. It is recognized as one of the best Student Life Cities in Sweden (Studentum, 2024).

The city has great connections to the main cities in Europe!



**No. 1**  
GLOBAL SUSTAINABLE  
COMPETITIVENESS  
INDEX 2024

**No. 2**  
INNOVATION IN THE WORLD.  
GLOBAL INNOVATION  
INDEX 2024

**No. 2**  
THE GOOD  
COUNTRY INDEX  
2024

**No. 1**  
GENDER EQUALITY  
EUROPEAN UNION GENDER  
EQUALITY INDEX 2024

**No. 5**  
QUALITY OF EDUCATION  
IN THE WORLD.  
UNIVERSITAS RANKING 2020

**No. 4**  
WORLD  
HAPPINESS REPORT  
2024



JÖNKÖPING UNIVERSITY

GJUTERIGATAN 5, P.O. BOX 1026, SE-551 11 JÖNKÖPING, SWEDEN  
PHONE: +46 (0)36 10 10 00, E-MAIL: STUDY@JU.SE, WEB: JU.SE



@jonkopinguniversity

